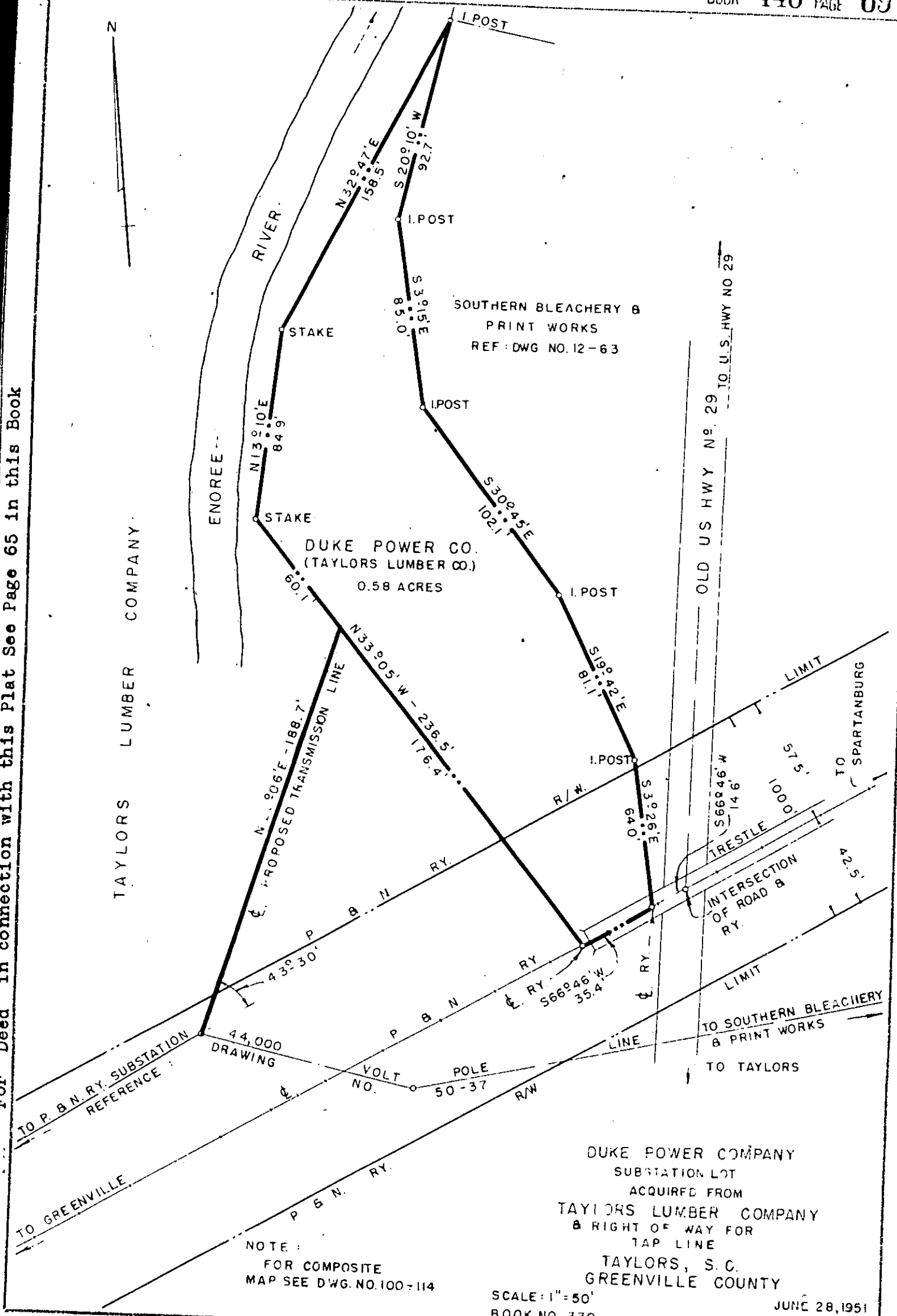


For Deed in connection with this Plat See Page 65 in this Book



TAYLORS LUMBER COMPANY

DUKE POWER COMPANY
 SUBSTATION LOT
 ACQUIRED FROM
 TAYLORS LUMBER COMPANY
 & RIGHT OF WAY FOR
 TAP LINE
 TAYLORS, S. C.
 GREENVILLE COUNTY

NOTE:
 FOR COMPOSITE
 MAP SEE DWG. NO. 100-114

SCALE: 1" = 50'
 BOOK NO. 330

JUNE 28, 1951
 FILE NO. 12-65

Recorded August 14th. 1951 at 10:00 A. M. #18707